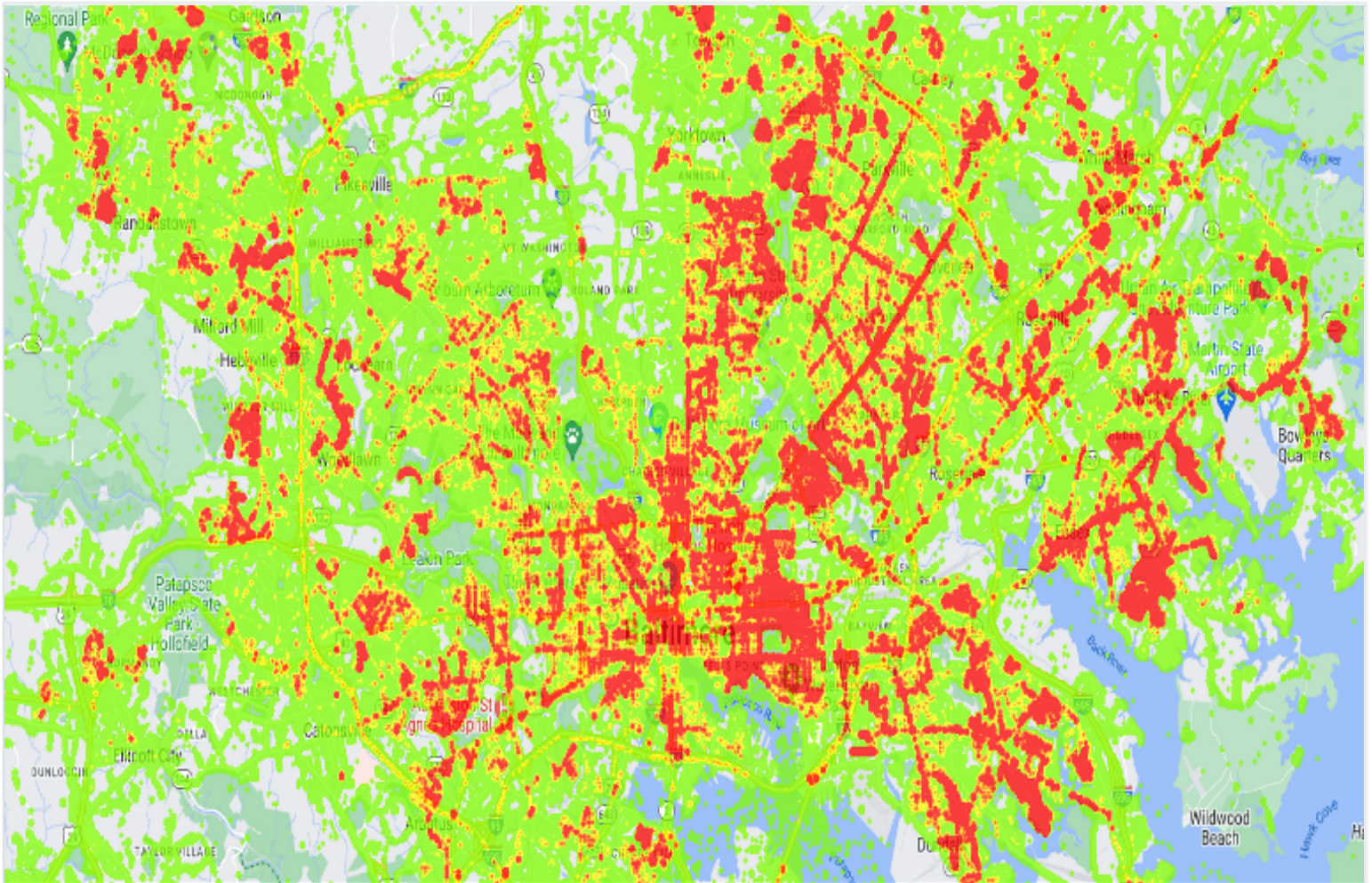


Scan Density Report

Density Map Information

<b>Agency:</b>	Thomson Reuters Demo	<b>Data Type:</b>	LPR Detections
<b>Data Source:</b>	Shared, Commercial Data	<b>Total Records:</b>	25,862,389
<b>Contributor:</b>	Data Subscription	<b>Time Frame:</b>	<b>Start Date:</b> 01-01-23 <b>End Date:</b> 12-01-23



Scan Concentration:

All Data Has Been Normalized